



## Certificate of Analysis

---

### LudgerSep R2 HPLC Column for Glycan Analysis

Cat. #: LS-R2-4.6x150

Batch #: B685-14

Size: 4.6 x 150 mm

---

This column conforms to the specifications given in Ludger document # LS-R2-GUIDE.

**Packed Solvent** 60 % acetonitrile (aq)

#### Test Analysis

**Flow Rate** 1.25 ml / min

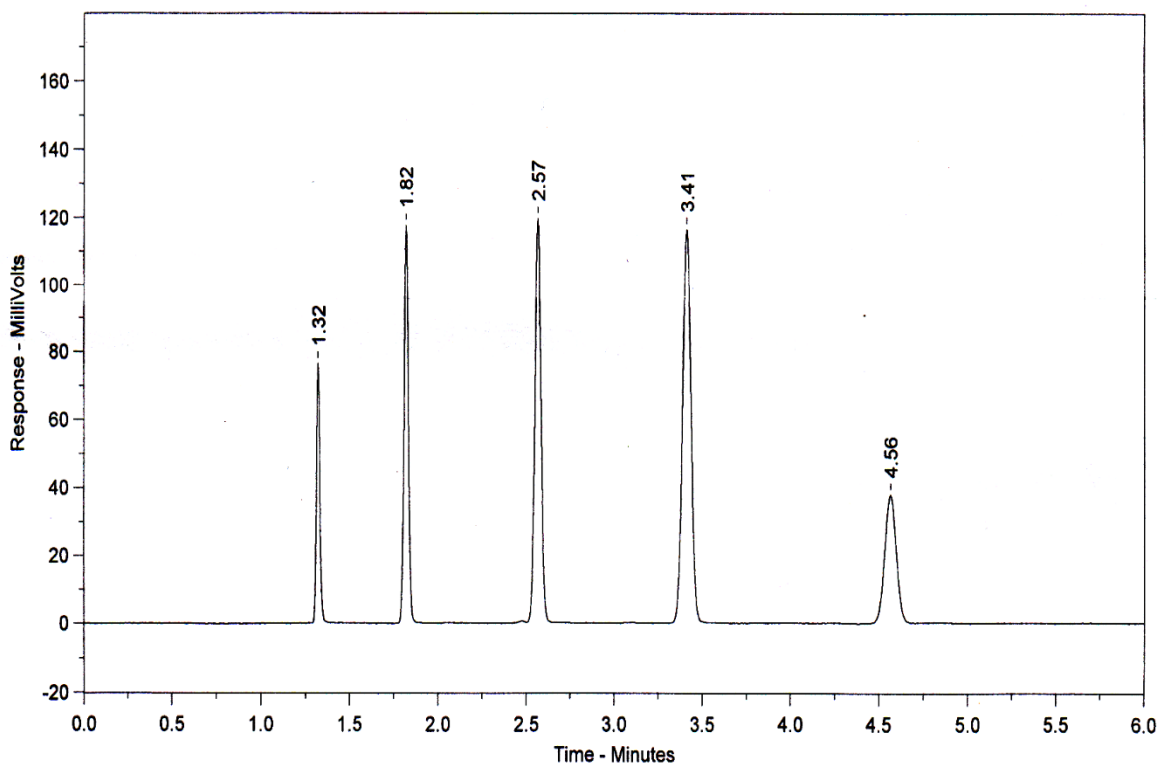
**Eluent** Isocratic 60 % acetonitrile (aq)

**Pressure** 1735 psi

**Temperature** Ambient

**Sample Volume** 2.5  $\mu$ l

**Detection** UV at 254nm



Peak No	Peak Name	Retention time (minutes)	Tailing Factor (5%)
1	Theophylline	1.32	1.15
2	p-Nitroaniline	1.82	1.08
3	Methyl Benzoate	2.57	1.03
4	Phenetole	3.41	1.01
5	o-Xylene	4.56	1.03

Efficiency o-Xylene (n/m) = 152798

Asymmetry Factor (5%) o-Xylene = 1.03