



Certificate of Analysis

LudgerSep R2 HPLC Column for Glycan Analysis

Cat. #: LS-R2-4.6x150

Batch #: B36E-02

Size: 4.6 x 150 mm

This column conforms to the specifications given in Ludger document # LS-R2-GUIDE.

Packed Solvent 60 % acetonitrile (aq)

Test Analysis

Flow Rate 1.25 ml / min

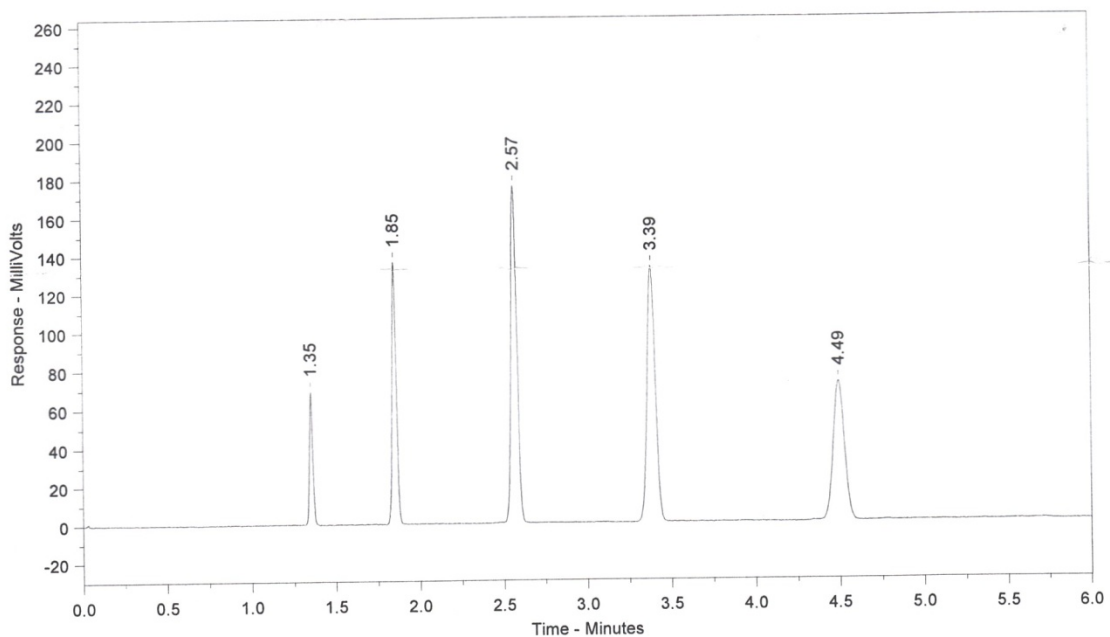
Eluent Isocratic 60 % acetonitrile (aq)

Pressure 1925 psi

Temperature Ambient

Sample Volume 2.5 µl

Detection UV at 254nm



Peak No	Peak Name	Retention time (minutes)	Tailing Factor (5%)
1	Theophylline	1.35	1.04
2	p-Nitroaniline	1.85	1.04
3	Methyl Benzoate	2.57	1.02
4	Phenetole	3.39	0.97
5	o-Xylene	4.49	1.03

Efficiency o-Xylene (n/m) = 139242

Asymmetry Factor (5%) o-Xylene = 1.03