

**Certificate of Analysis****LudgerSep™ N1 Amide HPLC Glycan Analysis Column**

Cat. #: LS-N1-4.6x250

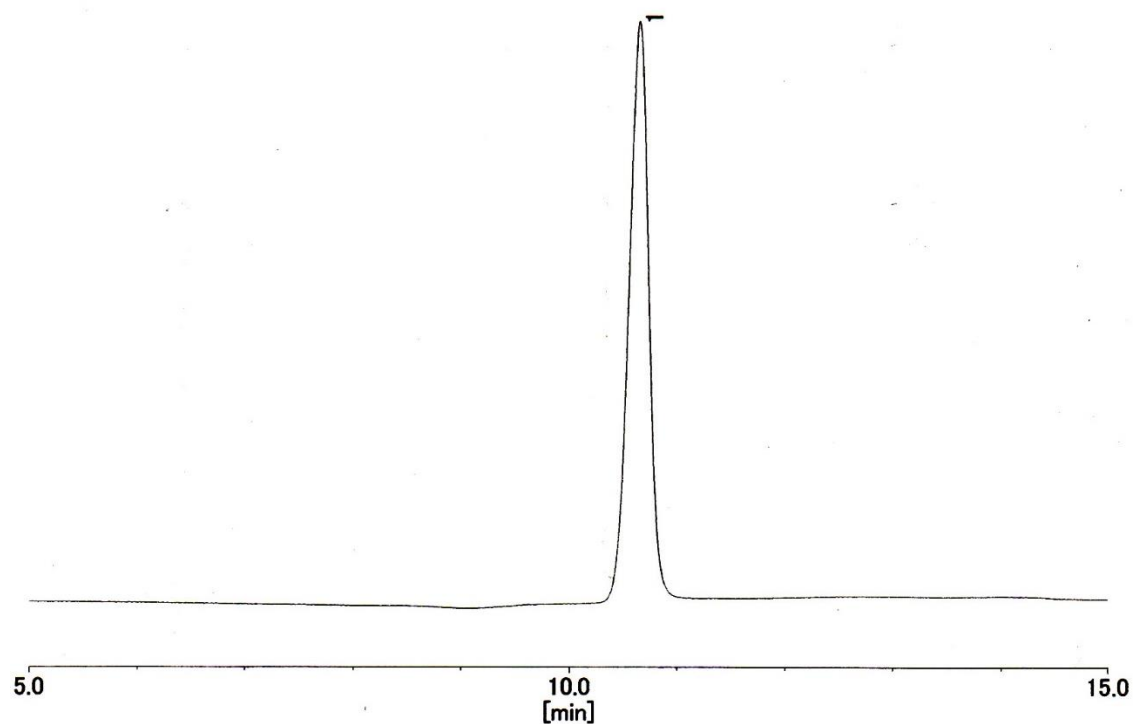
Batch: B89S-11

Size: 4.6 x 250 mm

This column conforms to the specifications given in Ludger document # LS-N1-GUIDE.

**Packed Solvent** 75 % acetonitrile (aq)**Test Analysis**

<b>Flow Rate</b>	1 ml / min
<b>Eluent</b>	Isocratic 75 % acetonitrile (aq)
<b>Pressure</b>	6.1 MPa
<b>Temperature</b>	25 °C
<b>Sample</b>	1-Mannitol (at concentration of 2 g dm <sup>-3</sup> )
<b>Sample Volume</b>	20 µl
<b>Detection</b>	Refractive Index

*Theoretical Plates = 15062*