



Certificate of Analysis

LudgerSep N1 Amide HPLC Glycan Analysis Column

Cat. #: LS-N1-4.6x250

Batch #: B7AU-03

Size: 4.6 x 250 mm

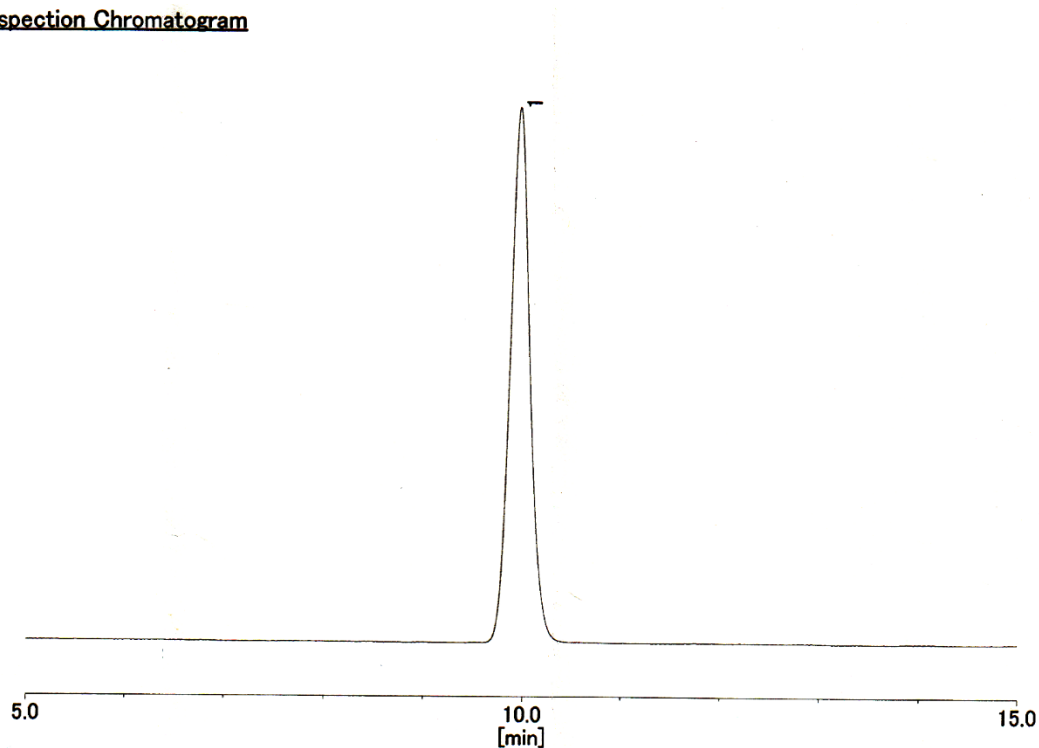
This column conforms to the specifications given in Ludger document # LS-N1-GUIDE.

Packed Solvent 75 % acetonitrile (aq)

Test Analysis

Flow Rate 1 ml / min
Eluent Isocratic 75 % acetonitrile (aq)
Pressure 5.8 MPa
Temperature 25 °C
Sample 1-Mannitol (at concentration of 2 g dm⁻³)
Sample Volume 20 µl
Detection Refractive Index

Inspection Chromatogram



Theoretical Plates = 12688