



## Certificate of Conformity

---

### LudgerSep™ C2 Anion Exchange HPLC Glycan Analysis Column

Cat. #: LS-C2-4.6x150

Batch: B8AU-06

Size: 4.6 x 150 mm

---

This column conforms to the specifications given in Ludger document # LS-C2-GUIDE.

**Packed Solvent**            0.1M Na<sub>2</sub> SO<sub>4</sub> and 30% methanol

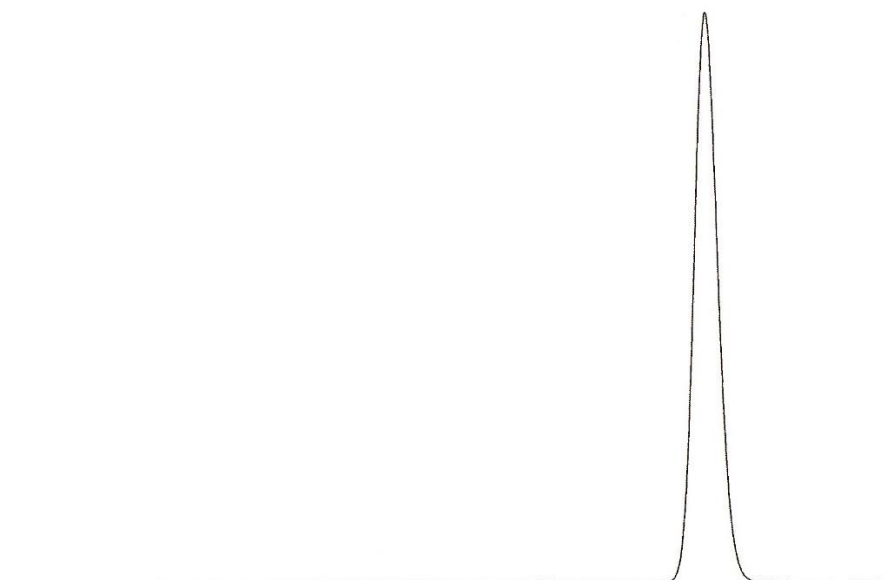
#### Test Analysis

**Flow Rate**                0.5 ml / min

**Eluent**                    0.1M Di-Sodium hydrogen orthophosphate dodecahydrate, 0.01M Tris (hydroxymethyl) aminomethane hydrochloride with pH adjusted to 7.0

**Sample**                    AMP

**Detection**                UV at 254 nm



*Theoretical Plates = 27985 plates/metre*