

Certificate of Analysis

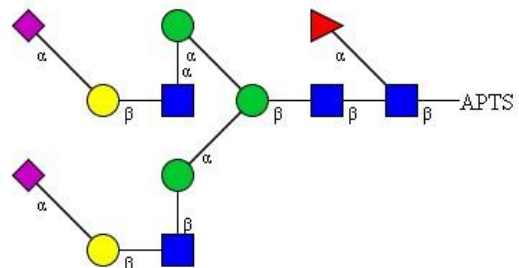
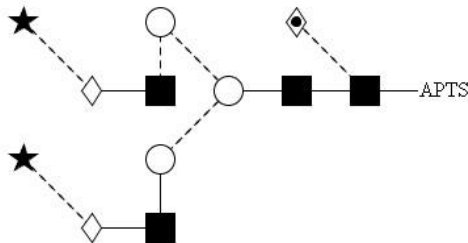
LudgerPure™ APTS Labeled A2F Glycan

Cat. #: CAPTS-A2F-01
Size: ~ 20 pmol

Batch: B28A-01
Expiry: 13 Mar 2024

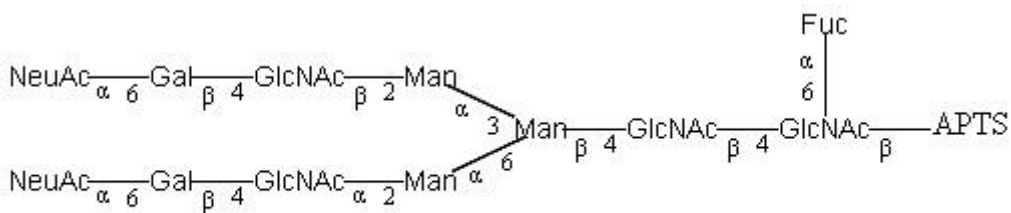
Alternative Names

FA2G2S2



Oxford Notation

CFG Notation



Text Notation

{The Oxford Notation glycan structure is drawn according to the scheme developed by Oxford-Dublin Glycobiology Laboratory (see Fig 2)}.

Purity: > 80.00% APTS labelled A2Fglycan, as assessed by uHPLC - see Fig 1.

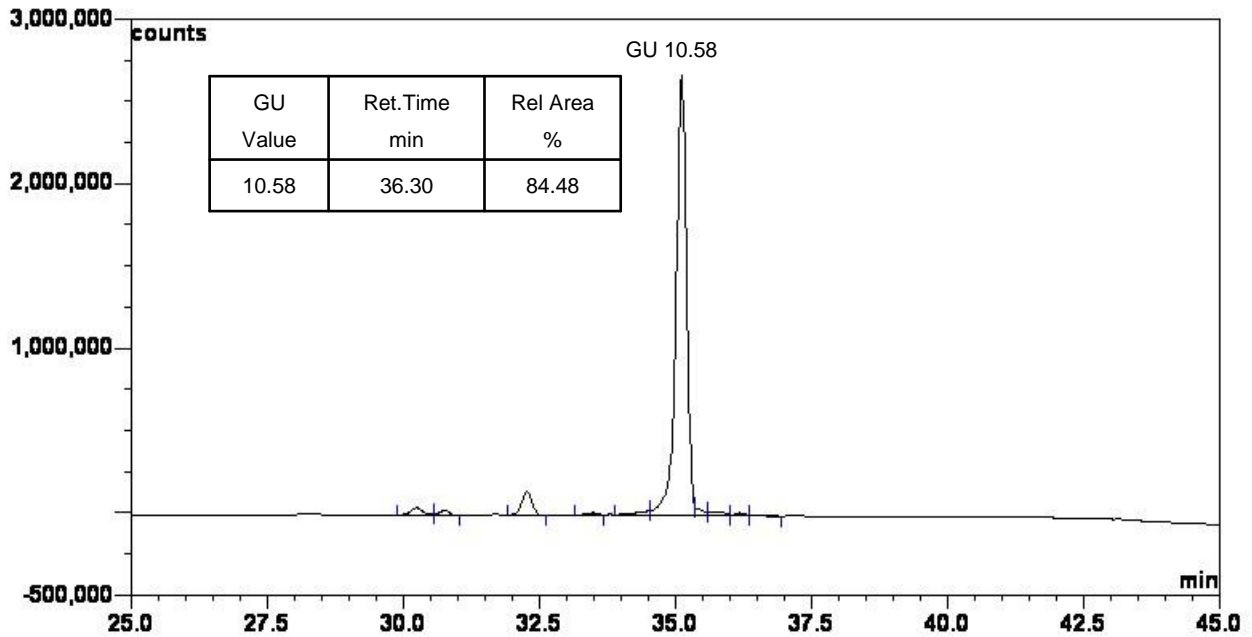


Figure 1: BEH uHPLC profile of APTS Labeled A2F Glycan (Cat. #: CAPTS-A2F-01, Batch # B28A-01).
A2F glycan structure identified by uHPLC . (GU value obtained from running internal GHP labelled with APTS).

The APTS labelled A2F glycan peak (figure 1) eluted at 36.30 minutes under the following uHPLC conditions:

Column: Waters BEH uHPLC column, 1.7 μ M

Flow: 0.5 ml/min

Temperature: 60 °C

Solvent A: 50 mM Ammonium formate pH 4.4

Solvent B: 100 % Acetonitrile

Gradient:

- 0 min - 78 % B
- 38.5 min – 55.9 % B
- 40.5 min - 0 % B
- 42.5 min - 0 % B
- 44.5 min - 78 % B
- 55 min - 78 % B

Detector: Ultimate 3000

Excitation wavelength: 448 nm

Emission wavelength: 510 nm

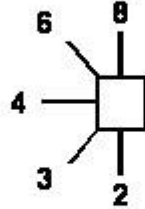
Symbol for sugar

- Glc
- GlcNAc
- ★ NeuNAc
- ◇ Gal
- ◆ GalNAc
- ◊ Fuc (deoxy galactose)
- Man
- △ Xylose

Fluorescent label

—APTS 8-Aminopyrene-1,3,6-trisulfonic acid

Linkage position



Linkage type

- β-linkage
- α-linkage
- ~ unknown β-linkage
- ~ unknown α-linkage

Figure 2: GlycoBase glycan structure key.