

Certificate of Analysis

LudgerPure™ 2AB Labeled NA2F Glycan

Cat. #: CAB-NA2F-01

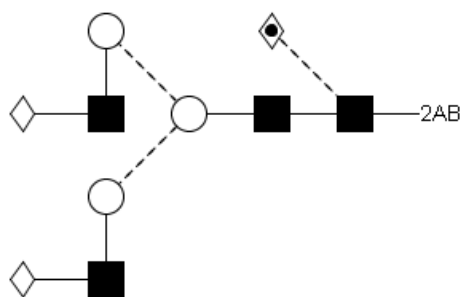
Batch: B2BN-01

Size: approx. 100 pmol

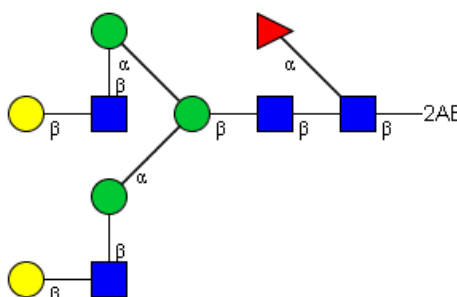
Alternative names

FA2G2 – G2F

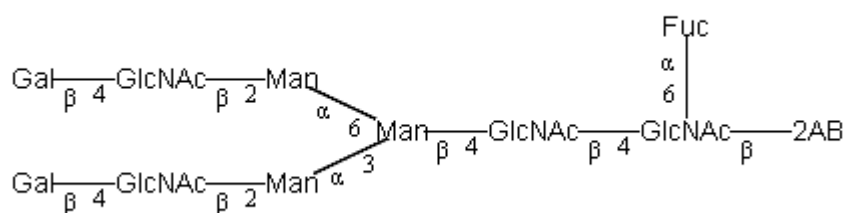
Structure



Oxford Notation



CFG Notation



Text Notation

Purity: > 98.2% 2AB labeled NA2F glycan, as assessed by HPLC - see Fig 1.

Amount: Sample vial determined to contain 96 pmols NA2F glycan – Test performed 13 Dec 2012.

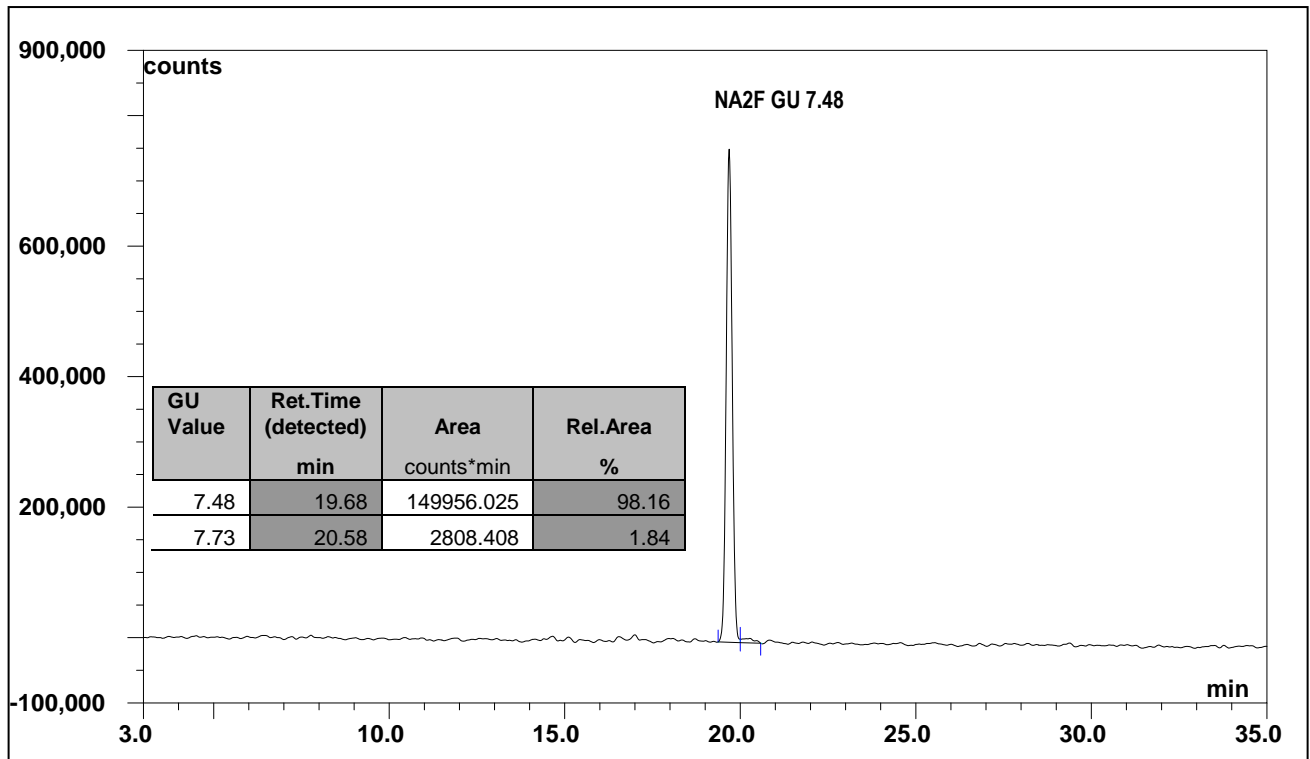


Figure 1: HILIC HPLC profile of 2AB labeled NA2F (see method conditions below)
 (Cat. #: CAB-NA2F-01, Batch B2BN-01).

**NA2F glycan structure identified by MALDI, MS & HPLC (GU value comparison to GlycoBase). This structure is drawn according to the scheme developed by Oxford-Dublin Glycobiology Laboratory (see Fig 2).*

2-AB NA2F peak seen above eluted at 19.7 minutes, under the following conditions:

HPLC Running Conditions:

Column: Waters BEH Glycan 1.7 μ m column (150mm)

Flow: See table below.

Temperature: 60 °C

Solvent A: 50 mM ammonium formate pH 4.4 Solvent B: 100 % acetonitrile

Gradient:

Time (min)	%B	Flow rate (mL/min)
0.0	78.0	0.50
38.5	55.9	0.50
40.5	0.0	0.25
42.5	0.0	0.25
44.5	78.0	0.25
50.5	78.0	0.25
51.5	78.0	0.50
55.0	78.0	0.50

Detector: Dionex FLD-3000

Excitation wavelength: 330 nm

Emission wavelength: 420 nm

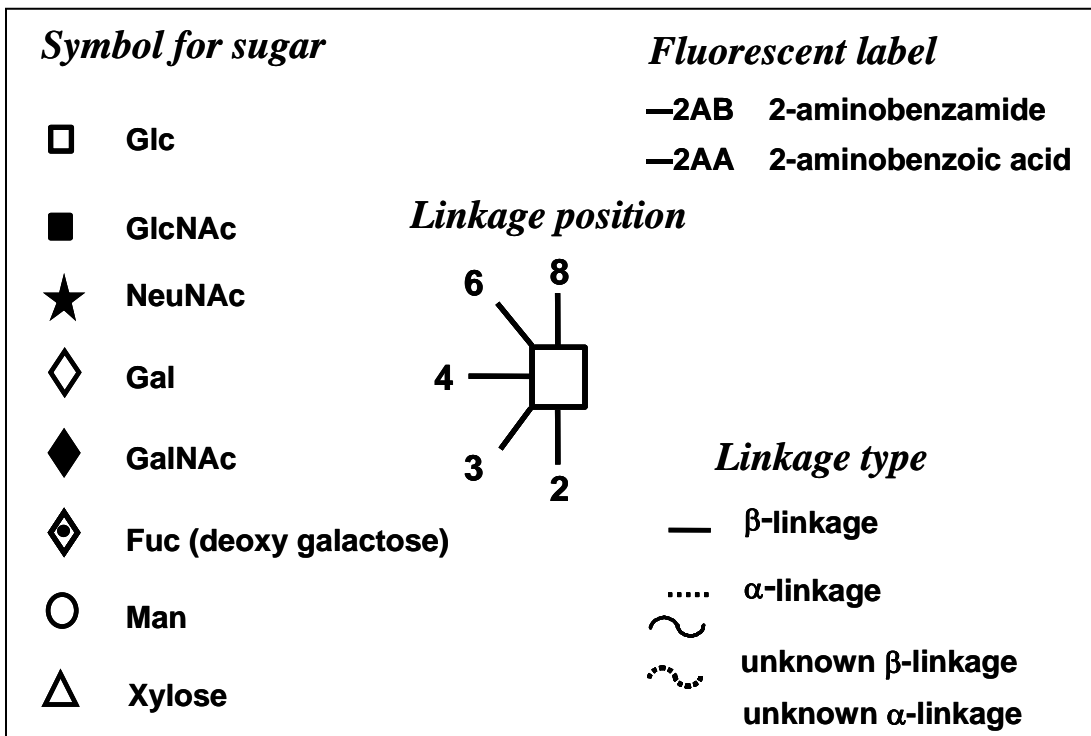


Figure 2: GlycoBase glycan structure key.