

## Certificate of Analysis

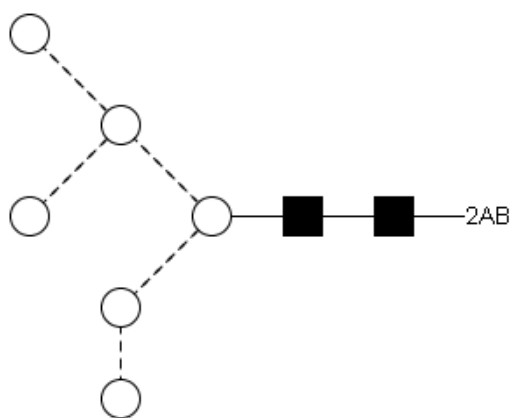
### LudgerPure™ 2AB Labeled MAN6 Glycan

Cat. #: CAB-MAN6-01

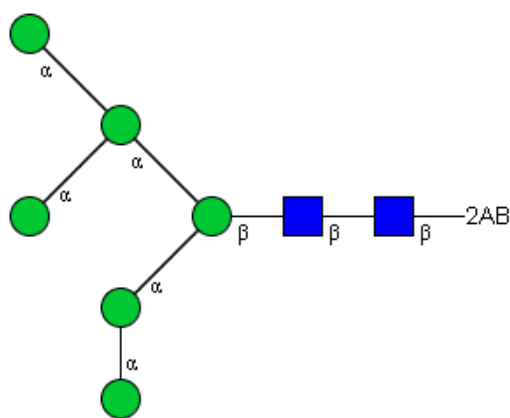
Batch: B31B-02

Size: approx. 100 pmol

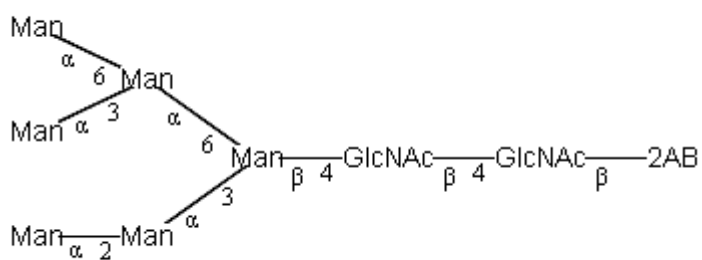
#### Structure



Oxford Notation



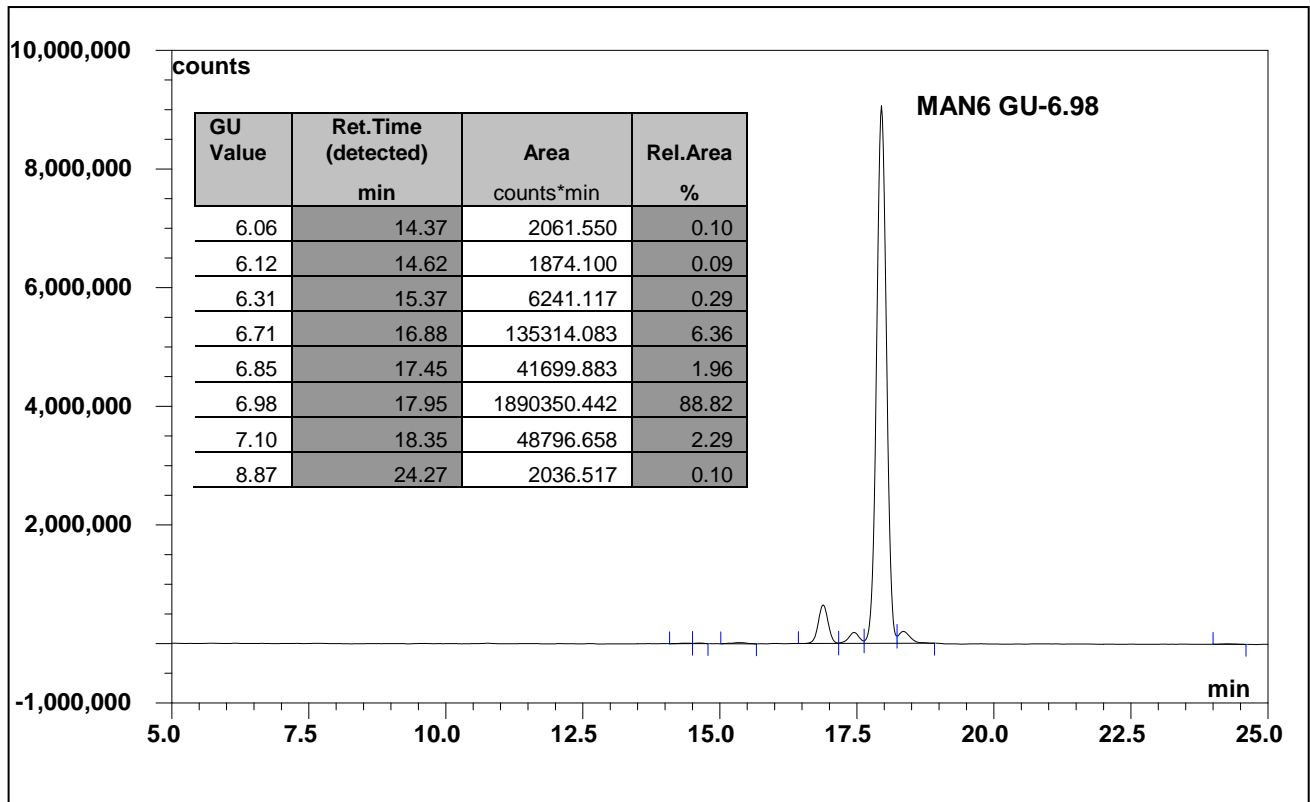
CFG Notation



Text Notation

**Purity:** 88.8% 2AB labeled MAN6 glycan, as assessed by HPLC - see Fig 1.

**Amount:** Sample vial determined to contain 138 pmols MAN6 glycan – Test performed 25 Jan 2013.



**Figure 1:** HILIC HPLC profile of 2AB labelled MAN6 glycan (see method conditions below)  
 (Cat. #: CAB-MAN6-01, Batch B31B-02).

*\*MAN6 glycan structure identified by MALDI, MS & HPLC (GU value comparison to GlycoBase). This structure is drawn according to the scheme developed by Oxford-Dublin Glycobiology Laboratory (see Fig 2).*

**2-AB MAN6 peak seen above, eluted at 18.0 minutes, under the following conditions:**

**HPLC Running Conditions:**

Column: Waters BEH Glycan 1.7µm column (150mm)

Flow: See table below.

Temperature: 60 °C

Solvent A: 50mM ammonium formate pH 4.4     Solvent B: 100 % acetonitrile

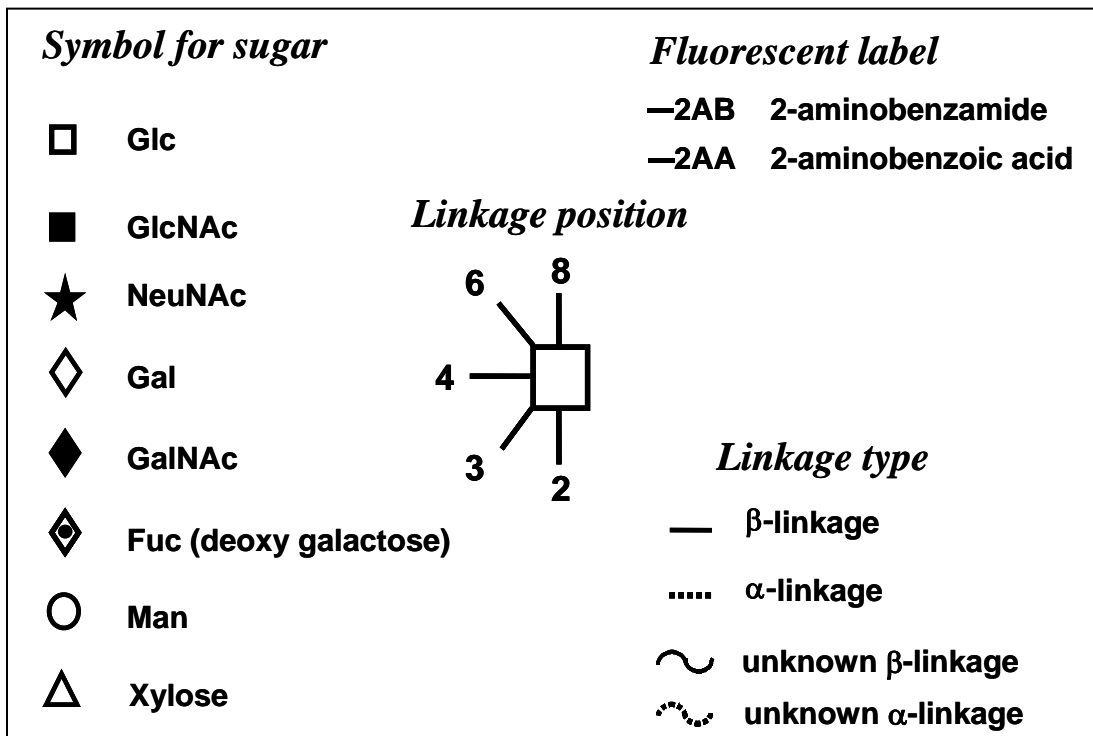
Gradient:

Time (min)	%B	Flow rate (mL/min)
0.0	78.0	0.50
38.5	55.9	0.50
40.5	0.0	0.25
42.5	0.0	0.25
44.5	78.0	0.25
50.5	78.0	0.25
51.5	78.0	0.50
55.0	78.0	0.50

Detector: Dionex FLD-3000

Excitation wavelength: 330 nm

Emission wavelength: 420 nm



**Figure 2:** GlycoBase glycan structure key.