

IgG Glycosylation

Your questions

What types of glycan structures are present?

What are the relative amounts of glycans with specific structural features?

Does my glycoprotein contain human &/or non-human sialic acids?

Which neutral monosaccharides are present?

Module

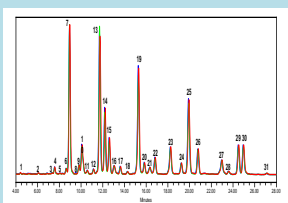
G-L1-N (triplicate)

G-L2-N (triplicate)

G-SA (triplicate)

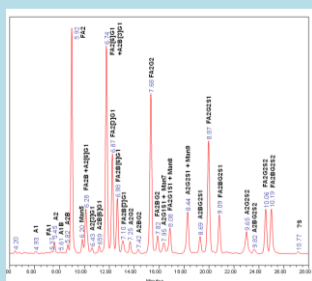
G-MC (triplicate)

HILIC UPLC (overlaid)

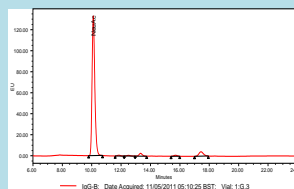


Exoglycosidase sequencing

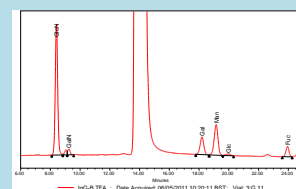
HILIC UPLC



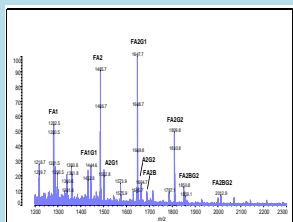
RP HPLC



RP HPLC



MALDI MS



Data provided

Type of Structure	%
Sialylated	32.42
High Mannose	2.66
Fucosylated Biantennary	82.21
Biantennary no fucose	16.50
Bisected Complex	22.42
Tri Antennary	0.35
Structure not determined	0.51-1.26
G0	19.62
G1	32.85
G2	43.49

IgG sialic acids		
nmoles/mg protein		
	Ave	CV
NeuGc	0.000	-
NeuAc	7.250	4.973

IgG neutral monosaccharides		
nmoles/mg protein		
	Ave	CV
GlcN	47	1.74
GalN	8	0.52
Gal	24	2.39
Man	41	1.60
Glc	5	9.15
Fuc	16	1.28